



Medium Chess Puzzle # 0083

By

G Bud Games
<https://gbud.in>

December 5, 2021

Contents

Medium Chess puzzle # 0083 - Mate in 2 moves	4
Medium chess puzzle 0083	4
Solution to medium chess puzzle 0083	5
Solution 1	5
Solution 2	7
Right moves for the solution to the medium chess puzzle 0083	9
Explanation for the moves	9
Categories of medium chess puzzle 0083	10
medium chess puzzle 0083 chart	10
How to view the solution to medium chess puzzle 0083	12
How to get help for moves in the medium chess puzzle 0083	13
Play chess for free	14

List of Figures

1	Solve this medium chess puzzle 0083. Mate in 2 moves @ https://gbud.in/gsy4w22	4
2	Solve this medium chess puzzle online with solution @ https://gbud.in/gsy4w22	4
3	Initial board position of medium chess puzzle 0083	5
4	Rb8 - This movement stops the opponent's kings to move to b file.	6
5	Ka5 - King moves in a file since your bishop and pawn attacks the third rank.	6
6	a8=Q# - Pawn in a file is promoted to a queen and check-mate. This is called ladder mate. This is how you can mate in 2 moves.	7
7	Initial board position of medium chess puzzle 0083	7
8	Rb8 - This movement stops the opponent's kings to move to b file.	8
9	Ka5 - King moves in a file since your bishop and pawn attacks the third rank.	8
10	a8=R# - Pawn in a file is promoted to a rook and check-mate. This is called ladder mate. This is how you can mate in 2 moves.	9
11	medium chess puzzle 83 chart 1	10
12	medium chess puzzle 83 chart 2	11
13	medium chess puzzle 83 chart 3	11

14	medium chess puzzle 83 chart 4	12
15	Click the solution button to view solutions @ https://gbud.in/gsy4w22	12
16	Click the help button to get help on next move @ https://gbud.in/gsy4w22	13
17	Solve more medium puzzles @ https://gbud.in/chsmdpz	13
18	Solve other puzzles @ https://gbud.in/chsgppz	13
19	Play chess online for free. Solve puzzles and play with friends	14
20	Solve this puzzle online by scanning this QR code or go to the link below	15

Medium Chess puzzle # 0083 - Mate in 2 moves

Solve this medium chess puzzle and improve your chess games through improvement of your chess strategies and chess tactics.

Puzzle No : 0083

Difficulty level : medium

Description : Mate in 2 moves

Next Move : White

Player level : Intermediate

Short URL for puzzle : <https://gbud.in/gsy4w22>

Medium chess puzzle 0083

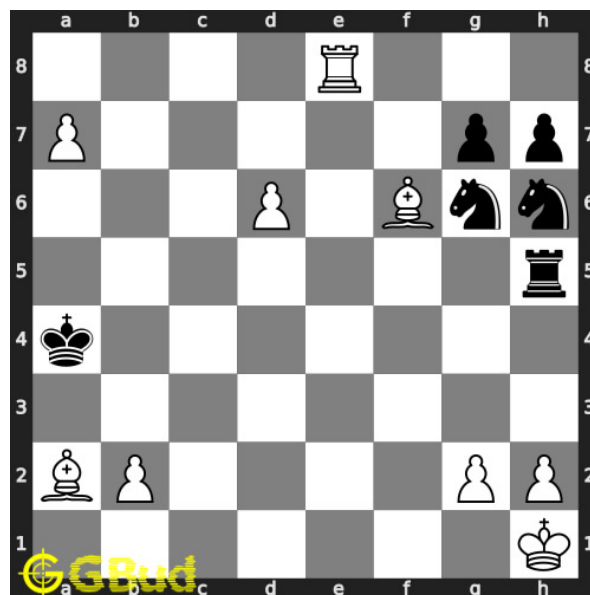


Figure 1: Solve this medium chess puzzle 0083. Mate in 2 moves @ <https://gbud.in/gsy4w22>



Figure 2: Solve this medium chess puzzle online with solution @ <https://gbud.in/gsy4w22>

Dont forget to check out [chess puzzles](#), [easy chess puzzles](#), [medium chess puzzles](#), [hard chess puzzles](#) and [chess puzzles collections](#) .

Solution to medium chess puzzle 0083

At this puzzle, next [move](#) is by [White](#). The objective of the puzzle is to mate in 2 moves.

See the interactive solution at the [puzzle page](#)

Solution 1

Initial board position This is the initial board position of medium chess puzzle 0083.

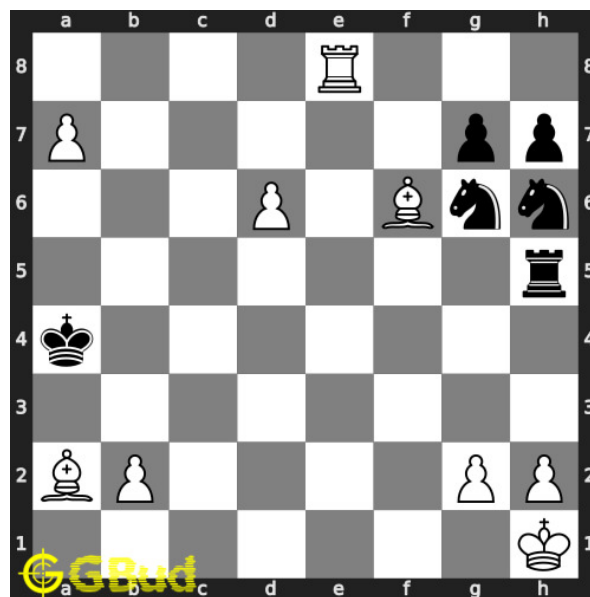


Figure 3: Initial board position of medium chess puzzle 0083

Move 1 Move by white

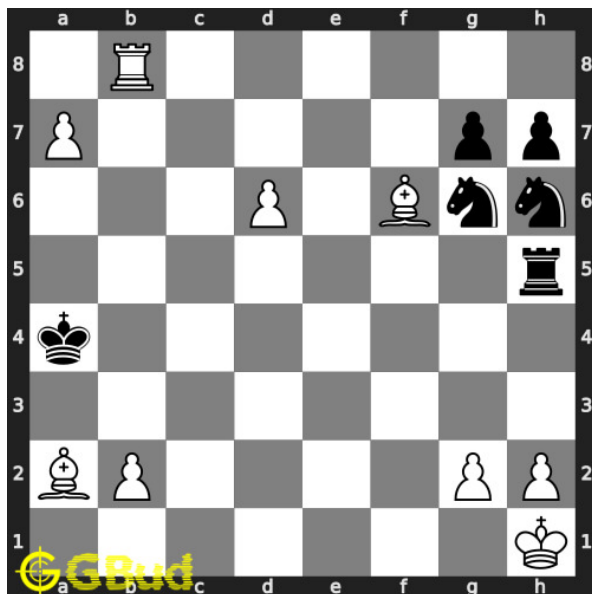


Figure 4: Rb8 - This movement stops the opponent's kings to move to b file.

Move 2 Move by black

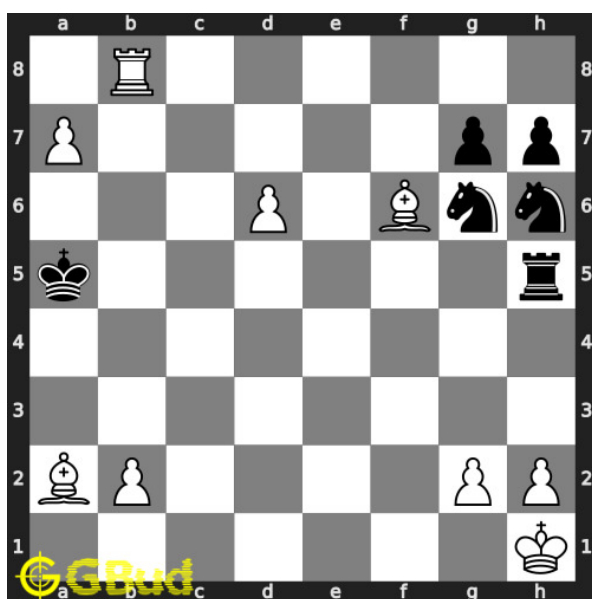


Figure 5: Ka5 - King moves in a file since your bishop and pawn attacks the third rank.

Move 3 Move by white

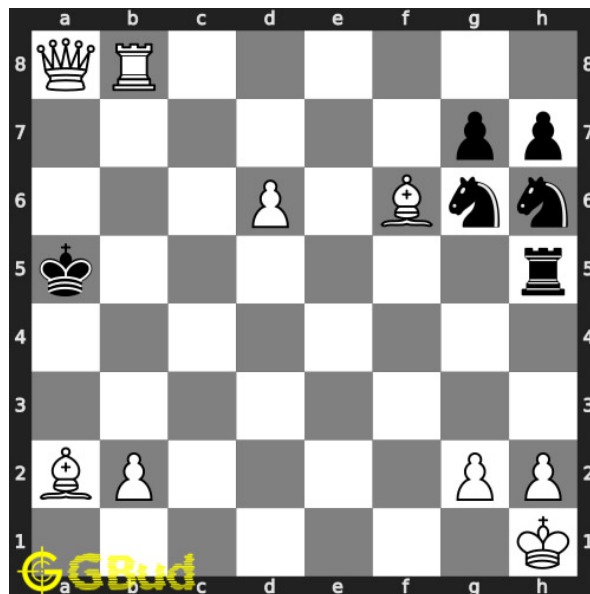


Figure 6: a8=Q# - Pawn in a file is promoted to a queen and checkmate. This is called ladder mate. This is how you can mate in 2 moves.

Solution 2

Initial board position This is the initial board position of medium chess puzzle 0083.

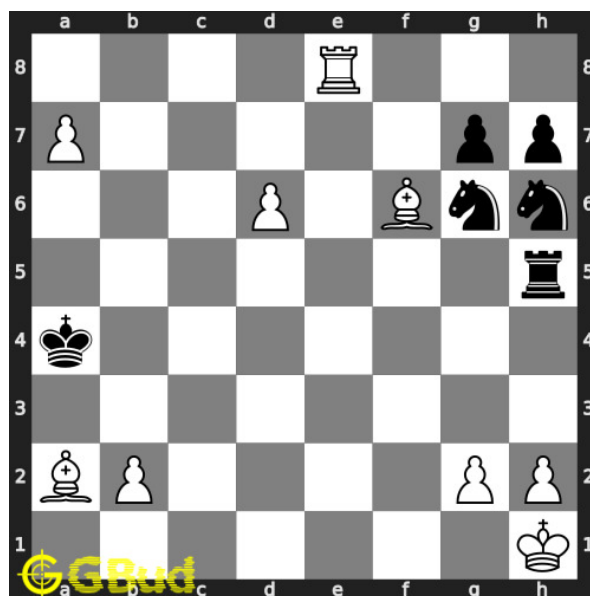


Figure 7: Initial board position of medium chess puzzle 0083

Move 1 Move by white

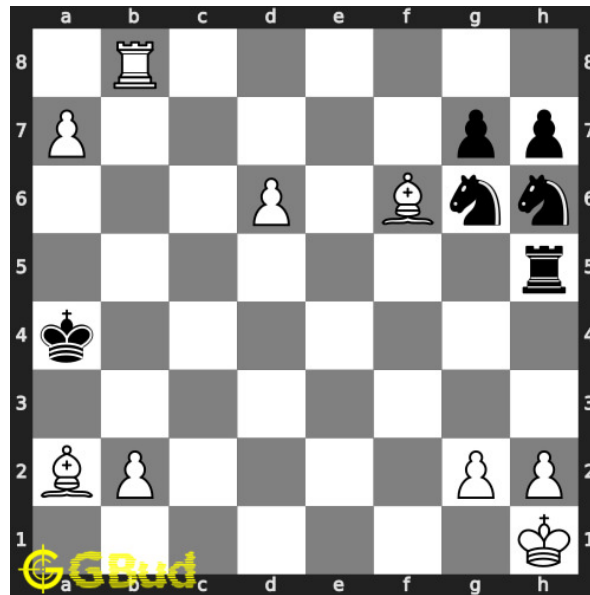


Figure 8: Rb8 - This movement stops the opponent's kings to move to b file.

Move 2 Move by black

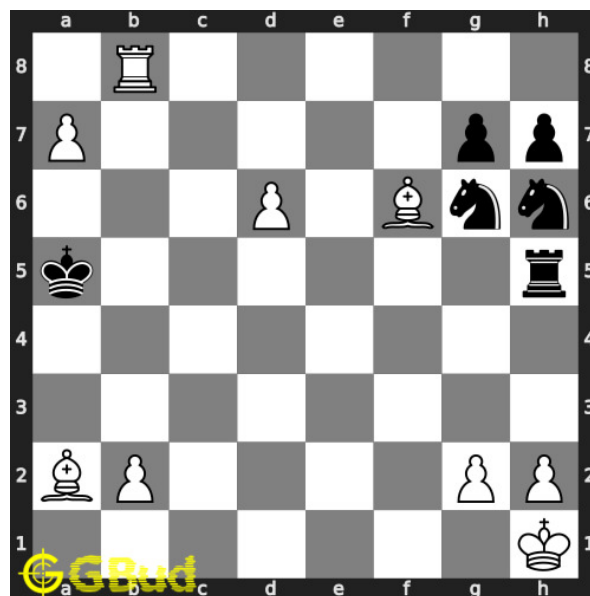


Figure 9: Ka5 - King moves in a file since your bishop and pawn attacks the third rank.

Move 3 Move by white

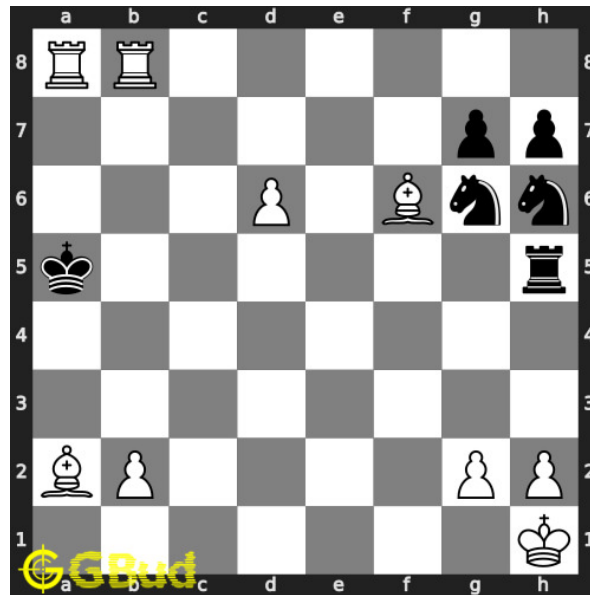


Figure 10: a8=R# - Pawn in a file is promoted to a rook and checkmate. This is called ladder mate. This is how you can mate in 2 moves.

Right moves for the solution to the medium chess puzzle 0083

Based on the objective of the puzzle, you have to make the right moves. Following are the right moves

1. Rb8, a8=Q#
2. Rb8, a8=R#

Explanation for the moves

1. Rb8 - This movement stops the opponent's kings to move to b file.
2. Ka5 - King moves in a file since your bishop and pawn attacks the third rank.
3. a8=Q# - Pawn in a file is promoted to a queen and checkmate. This is called ladder mate. This is how you can mate in 2 moves.
4. a8=R# - Pawn in a file is promoted to a rook and checkmate. This is called ladder mate. This is how you can mate in 2 moves.
5. For right move - You have used the promotion effectively to mate in 2 moves. Great move
6. For wrong move - You should have moved correctly. You could have had a checkmate after promoting your pawn. Try again

Categories of medium chess puzzle 0083

This medium chess puzzle falls in these categories.

1. [Medium chess puzzles](#)
2. [Mate in 2 puzzles in chess](#)
3. [Endgame puzzles in chess](#)
4. [Promotion puzzles in chess](#)
5. [Strategy puzzles in chess](#)
6. [Mate pattern puzzles in chess](#)
7. [Pawn puzzles in chess](#)
8. [Queen puzzles in chess](#)

medium chess puzzle 0083 chart



Figure 11: medium chess puzzle 83 chart 1



Figure 12: medium chess puzzle 83 chart 2



Figure 13: medium chess puzzle 83 chart 3

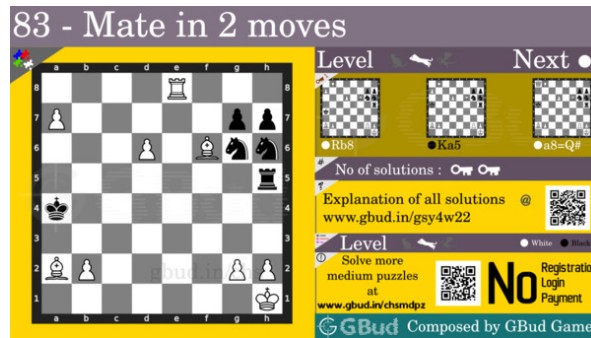


Figure 14: medium chess puzzle 83 chart 4

How to view the solution to medium chess puzzle 0083

To view the [solution to this puzzle](https://gbud.in/gsy4w22), follow the steps given below

1. Go to the [puzzle page](https://gbud.in/gsy4w22)
2. Click the solution button (Key as shown [below](https://gbud.in/gsy4w22)) to view the solution



Figure 15: Click the solution button to view solutions @ <https://gbud.in/gsy4w22>

How to get help for moves in the medium chess puzzle 0083

To get help or the possible next moves in the puzzle, , follow the steps given below

1. Go to the [puzzle page](#)
2. Click the help button (exclamation mark as shown [below](#)) to get help or suggestion on next possible [move](#)



Figure 16: Click the help button to get help on next move @ <https://gbud.in/gsy4w22>



Figure 17: Solve more medium puzzles @ <https://gbud.in/chsmdpz>



Figure 18: Solve other puzzles @ <https://gbud.in/chsgppz>

Play chess for free



Figure 19: Play chess online for free. Solve puzzles and play with friends

Play chess for free at <https://gbud.in/chs>

We present you a platform to play chess online with friends for free. No need to install any app. You can play chess for free without registration or login.

Simple. You can do several chess related activities.

1. [solve chess puzzles](#)
2. [learn about chess](#)
3. [play chess with computer](#)
4. [play chess with friend](#)
5. [create your own chess games](#)

6. [fen viewer](#)
7. [fen editor](#)
8. [fen generator](#)
9. [pgn viewer](#)
10. [chess board editor](#)
11. [view famous chess games.](#)



Figure 20: Solve this puzzle online by scanning this QR code or go to the link below

<https://gbud.in/gsy4w22>

Read the latest article on Medium Chess puzzle # 0083 - Mate in 2 moves by scanning this QR code or click the link

Previous article : [« Medium Chess puzzle # 0082 - Mate in 2 moves](#)

Next article : [Medium chess puzzles »](#)

[Back to top](#)

[Contact Us](#)